

For jobs involving the cleaning of tubes, deburring, removal of lacquer and rust on a cable drum.

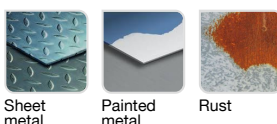


- Corrugated wire
- Steel wire
- Circular shape

#### Machine



#### Application



#### Features



#### Properties and benefits

- + Corrugated wire: light stripping of your surfaces, thanks to the crimped material. ➡ Enables the gentle brushing of your surfaces with no need to apply pressure.
- + Steel wire: bristles that are highly resistant to wear and traction ➡ Enables stripping, rust removal, and the deburring of all your surfaces.
- + Circular shape: circular geometry for use on edges. ➡ Enables simple stripping on narrow surfaces.

Code	EAN	Ø	Edge thickness	grain	Specificity	QTY	PCB
XT20254006100	3128820061005	125x20	0,35		Corrugated steel	1	1
XT20254006102	3128820061029	150x15	0,35		Corrugated steel	1	1
XT20254006104	3128820061043	200x15	0,35		Corrugated steel	1	1