

XT20512 | CUP brush - Corrugated steel wire - Scouring of the metal ESSENTIAL (Hanging cardboard)

For stripping work, such as the removal of paint, rust, and limescale

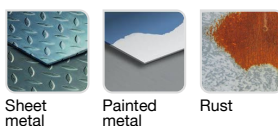


- Quick-change shank
- Corrugated wire
- Steel wire
- Cup shape

Machine



Application



Features



Properties and benefits

- + Quick-Change hex attachment: a hexagonal recessed attachment for the quick locking and unlocking of the bit. Compliant with the DIN 3126 E6.3 standard ➡ Enables the quick changing of your bits by doing away with the manual tightening/loosening of the chuck. For drills and screwdrivers.
- + Corrugated wire: light stripping of your surfaces, thanks to the crimped material. ➡ Enables the gentle brushing of your surfaces with no need to apply pressure.
- + Steel wire: bristles that are highly resistant to wear and traction ➡ Enables stripping, rust removal, and the deburring of all your surfaces.
- + Cup shape: round geometry for use on flat surfaces. ➡ Enables simple stripping on flat and wide surfaces.

Code	EAN	Ø	Edge thickness	grain	Specificity	QTY	PCB
XT2052006060	3128820060602	50	0,35		Corrugated steel	1	3
XT2052006062	3128820060626	75	0,35		Corrugated steel	1	3