

Carbide, highly resistant to abrasion, enables maximum service life. The HM blades are suitable for all fields of use.

## ■ Carbide toothing



### Machine



### Application



Plasters /  
Primers

### Features



**RAPIDE**  
FAST

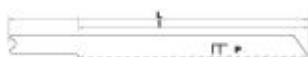
**BiM**



**LONG**  
LIFE

### Properties and benefits

- + Carbide teeth: Carbide teeth: carbide-tipped teeth ➡ Enables exceptional performance in fibre glass-reinforced plastic materials, fibrocement panels, Monomur brick, or plaster board.



Code	EAN	Cutting thickness	Cutting type	Sawing cutting quality	L   I	Pitch	QTY	PCB
------	-----	-------------------	--------------	------------------------	-------	-------	-----	-----