

Aggressive angle brush for intensive use, for all deburring tasks, and for the removal of rust and paints.

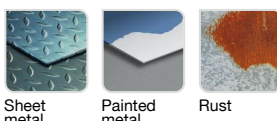


- Superior long life
- Adaptable to fit grinders
- Twisted wire
- Steel wire
- Conical brush

Machine



Application



Features



Properties and benefits

- + M14 attachment adaptable to fit grinders: threading specifically for fixing onto grinders. ➡ Universal and secure attachment that can be adapted to suit all grinders Ø115, 125, 230. Select the brush diameters based on your grinder.
- + Twisted wire: material is twisted for more aggressive cleaning ➡ Enables thorough stripping thanks to the strength of the twisted bristles, without any need to apply pressure.
- + Steel wire: bristles that are highly resistant to wear and traction ➡ Enables stripping, rust removal, and the deburring of all your surfaces.
- + Conical shape: cymbal-type geometry for use at an incline of approx. 30°. ➡ Enables simple stripping in interior corners, to eliminate residues.

| Code | EAN | Ø | Edge thickness | grain | Specificity | QTY | PCB |
|-------------|---------------|----|----------------|-------|-------------------|-----|-----|
| XT202520137 | 3221912128959 | 95 | 0,5 | | Spring steel wire | 1 | 1 |