

# XT51002 | Reciprocating saw blade - For pruning and firewood - Universal attachment **TECHNIC** (Carton sleeve)

High-alloy vanadium chrome steel is used for working on softer materials such as wood, fiberboard panels, and synthetic materials.



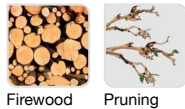
- Cross ground, milled set
- Carbon steel toothing
- Variable teeth



## Machine



## Application



## Features



## Properties and benefits

- + Cross ground, milled set: blade for rapid cutting into wood. ➡ Enables the quick progression of the blade through the wood.
- + Blade made from HCS carbon steel: high-strength carbon steel ideal for cutting into soft wood and non-abrasive carpentry materials. ➡ Enables longer service life thanks to the flexibility of the blade.
- + Variable toothing: design whereby the teeth are positioned with irregular gaps (itches) and with alternating small and large teeth with different gap sizes. ➡ Enables the cutting of a wide range of different materials. Reduces the risk of teeth breaking and reduces vibrations when cutting.



Code	EAN	Cutting thickness	Cutting type	Sawing cutting quality	L	I	Pitch	QTY	PCB
XT505826001	3221912083555	190	Curve & Straight cut	Quick Cut	230	210	2	1	